



# Wirral Council

Department of Regeneration

Parks and Countryside Service

**DRAFT**

## Vale Park

Management Plan  
&  
Security Audit

2008 – 2012



## **Contents**

**1) Introduction and vision**

**2) The wider policy context**

**3) Site information**

**4) Analysis and assessment and Security Audit**

**5) Aims and objectives**

**6) Action plan**

**7) Monitoring and review**

**8) Appendix**

- i. Aerial Photograph
- ii. Tree Condition Survey, November 2006
- iii. Events programme 2007
- iv. Maintenance schedule

## 1) Introduction and vision

Wirral Council produced this management plan in conjunction with the Friends of Vale Park. The plan is intended to provide a framework for the development and improvement of the park over the next five-year period up to December 2012. The plan is intended to be a working document, which is open to new ideas at any time. We welcome your suggestions and comments for incorporation into this plan, whether you are a local resident, user or organisation. Your input will help us to develop a park that meets everyone's needs and aspirations. The park was successful in gaining the **Green Flag Award** in 2001 and has retained the award on consecutive years since then.

If you wish to find out further information about this document or submit any suggestions please contact **Peter Whittle**, Parks Development Officer, in the Parks and Countryside Service at Wirral Council on 0151 666 4713 or by email at [peterwhittle@wirral.gov.uk](mailto:peterwhittle@wirral.gov.uk) alternatively, you can contact Peter Whittle by writing to:

**Parks and Countryside**, Wirral Council, Hamilton Street, Birkenhead, Wirral, CH41 5FN.

If you would like more information or are interested in joining **the Friends of Vale Park** please contact **Rusty Keane**, 92 Vaughan Road, Wallasey, Merseyside, CH45 1LP – *Rusty is it o.k. to include your contact details?*

### **Vision:**

*To be agreed with friends, stakeholders and staff*

## 2) The wider policy context and its relevance to the park

Wirral Council has produced 9 corporate objectives:

- PROTECTING AND IMPROVING OUR ENVIRONMENT
- PROMOTING AND SUPPORTING THE ECONOMIC REGENERATION OF WIRRAL
- PROVIDING EDUCATIONAL AND CULTURAL OPPORTUNITIES FOR ALL
- IMPROVING THE HEALTH OF WIRRAL PEOPLE
- MAKING WIRRAL SAFER
- MEETING THE HOUSING NEEDS OF WIRRAL
- SUPPORTING AND PROTECTING VULNERABLE PEOPLE
- IMPROVING TRANSPORT
- CONTINUOUSLY IMPROVING SERVICES

The **Parks and Countryside Service Plan 2007/08** sets out the targets for the Service within the context of the above corporate objectives and the **Regeneration Departmental Service Plan for 2007/08**.

## Departmental Mission Statement:

*'Promoting a healthy, safer lifestyle and improving the quality of life for all'.*

*Aims:*

- *To enable sustainable, economic, social, neighbourhood and environmental regeneration*
- *To improve the health and well being of Wirral residents*
- *To promote opportunities for personal, community and business development*

The Park is designated Urban Greenspace under the Unitary Development Plan (Adopted 2000)

### 3) Site information

**Name:** Vale Park

**Primary classification:** Local Park

**Grid Reference:** ?

**Ward:** New Brighton

**Address:** Magazine Promenade, New Brighton, Wallasey, Wirral, Merseyside

**Size:** 3.95 Hectares

**Green Flag award scheme winner:** 2001, 2002, 2003, 2004, 2005, 2006 & 2007

**Existing facilities and features:**

- Bandstand
- Café
- Community Centre
- Annual bedding displays
- Mature tree stock
- Open grass areas
- Five-a-side pitch
- Rose Garden
- Children's play area

**Tenure:**

The site is owned and managed by the Parks and Countryside Service of Wirral Council's Department of Regeneration (Cultural Services Division).

Vale House Community Centre and café is **subject to a ....year lease** agreement between Wirral Council (Asset Management Section, Corporate Services Department) and the Vale House Joint Management Committee.

The former park lodge house situated adjacent to the entrance on Magazine Lane is in private ownership.

A tenancy agreement for seasonal trading is issued (renewable every three years) for the sale of ice cream from a designated pitch situated in proximity to the park's promenade entrance.

The Senior Community Liaison Officer of Wirral Council's Community Services (Regeneration Department) is currently based within an office on the first floor of the park's Coach House.

### **Summary of main uses:**

- As a venue for performance
- Passive and active recreation
- Children's play
- Quiet reflection
- Dog walking
- Ball games
- Visiting the park's Café
- Vale House Community Centre provides a range of adult learning courses, a pre-school group and elderly persons luncheon club

### **Partner organisations:**

Merseyside Police  
Wirral Council Community Safety Team

### **Access:**

The 411 bus from Birkenhead to New Brighton stops every 30 minutes on Seabank Road, a 2-minute walk to the park.

The park has a small rough surfaced car park accessed from Woodlands Drive. The park has six entrances located respectively on Woodland Drive, Vaughan Road, three on Magazine Lane and Magazine Promenade.

All entrances are suitable for wheel chair and mobility scooter access.

A car park situated adjacent to Vale House offers preference to visitors with mobility difficulty.

The public toilets are suitable for wheelchair users.

## History:

In 1830 the area of land now occupied by Vale Park was formerly an estate called Liscard Vale this being the origin of the park's name. The estate was later divided, with the second estate being named The Woodlands, now recalled by Woodland Drive, the Road situated at the park's Western boundary.

In 1898, at a cost of £7,750, Wallasey Urban District Council purchased both estates, with the intention of providing a 'lung' or breathing space for an increasing population. The combined grounds opened as Vale Park on 20th May 1899.



Incidentally the New Brighton Tower, seen in the background of the above photograph; was designed by Architects Maxwell and Turk of Manchester and patterned on the Eiffel Tower in Paris, construction commenced in 1896 and was completed in approximately 1900. Standing 621ft high the tower was taller than Blackpool Tower (548ft). The Tower was dismantled in 1921.

Vale House built c. 1830 was originally a family home possibly belonging to a Cotton broker and was later extended. The family of Charles Holland, a Liverpool businessman and Wirral JP, lived here for over 50 years. Charles Holland travelled widely, returning with Botanical specimens and his gardeners planted many of the trees now gracing the park.





For much of the 20th century Vale House accommodated the park staff, though it lay disused for some years The Friends of Vale Park encouraged the council to restore it. The building opened as a community centre in 1993.

William Grinsell Burston was the first Head Gardener of Vale Park, though his title was *Curator*, perhaps reflecting the knowledge and expertise of someone in this position at the end of 19th century. He came to Liscard Vale as Head Gardener in 1890. When the estate was taken over by the council; 'W.G' (as he was always known) stayed on and became Curator to the new Vale Park. Most of the laying out of the park, arranging the flowerbeds and paths, etc was undertaken by him. He was considered to be an expert Botanist, and spent many hours sorting seeds and discussing rare plants with specialists from Liverpool museum. W.G. died at Vale (Park) House in 1918.

Ernest Burston, W.G's youngest son worked as a Vale Park gardener between 1918 and 1946 living with his wife in Vale House which had been converted into two flats following his father's death

In 1926 a Doric-columned bandstand was constructed and played host to brass band concerts as it continues to do so to this day.

The children's show 'Joytime' originally run by Norman Trafford and his wife Dorothy Carr took place each summer at the bandstand for a period of some 45 years. She was awarded the British Empire Medal in 1992 for her work with the show. 'Auntie Dot' continued until 1997, she died in 1998. A children's show still takes place at the bandstand during the summer months, organised by a voluntary committee.



New Brighton Tower as seen from the park during early 1900's

Following Local Government re-organisation in 1974 responsibility for the park transferred from Wallasey Corporation to the unifying Authority, 'Wirral Council', under the Department of Leisure Services and Tourism 'Outdoor Recreation Division'. Further re-organisation in 2001 saw the Leisure Services Department merge with the Department of Education to form the new Department of Education & Cultural Services. The Parks and Open Spaces Section of Cultural Services became the Parks and Countryside Service and joined with the Department of Regeneration in April 2006.

### **Resources:**

- Area Manager and Assistant Manager (based at Central Park)
- Three park based members of staff
- A range of horticultural machinery and tools
- Annual revenue budget
- Visiting maintenance staff and equipment
- Visiting Arboriculture team

### **Summary of the known problems**

- ❑ Anti social behaviour/Youths causing annoyance
- ❑ Dog fouling
- ❑ Surface condition of the car park area
- ❑ Overall lack of capital investment
- ❑ Children's play area requires refurbishment
- ❑ Demolition and landscaping to area of the former public toilets
- ❑ Condition of boundary Sandstone walling to Magazine Lane
- ❑ Condition of fencing to the promenade frontage
- ❑ Upgrading required to the park's infrastructure

### **Staff**

Two full time gardeners are based at the park; working Monday to Friday, hours 07:47am – 16:30pm (Monday to Thursday), 07:45am – 12:30pm (Friday). The Gardeners duties include the following:

- ❖ Pedestrian grass cutting
- ❖ Hedge cutting
- ❖ Rose bed maintenance
- ❖ Planting and care of annual bedding
- ❖ Shrub bed maintenance
- ❖ Rectification of vandal damage
- ❖ Toilet cleaning
- ❖ Litter removal

A Gardener operating a ride-on machine visits the park to undertake mowing of the larger grass areas.

A specialist team undertake seasonal maintenance of the park's tree stock.

A playground inspection team visits the park to undertake a weekly safety inspection (Monday – Friday) of the children's play area.



The Area Parks Manager and the Assistant Area Parks Manager are responsible for the management of the park. The area grounds maintenance depot is located at Central Park, Liscard Road, the contact telephone number for the area office is 0151 638 5608.

### **Skill gaps**

The **Parks and Countryside Service Plan 2007/08** recognises that a skill gap currently exists within the division's operational staffing, in consequence three main aims have been identified in order to address the issue:

1. Review Parks Modern apprentice scheme
3. Produce a staff training action plan
4. Improve training for parks staff in biodiversity awareness

### **Stakeholders**

- The Friends of Vale Park
- Vale House Joint Management Committee
- The Bandstand Committee
- Community Services
- New Brighton Primary School

### **What standards are management trying to achieve**

The intention is for the park to continue to achieve the standards as defined by the Green Flag Award Scheme.

## **4) Analysis and assessment**

As with many parks across the country, a decline in investment in green space over previous decades has seen maintenance standards the condition of facilities and infrastructure within municipal parks decline.

The current condition of the Park has been assessed using the following criteria as defined by the Civic Trust's Green Flag Award scheme:

- i. A welcoming park
- ii. Healthy, safe and secure
- iii. Clean and maintained
- iv. Sustainability
- v. Conservation and heritage
- vi. Community involvement
- vii. Marketing
- viii. Management

### **i) A welcoming park**

A distinctive sign located on Seabank Road at the junction to Magazine Lane indicates the direction to Vale Park's Café.

A large plan of the New Brighton area is situated adjacent to the park's promenade entrance and contains information on the history of the park.



Finger posts situated on the Mersey River Promenade indicate the direction of the park.

A prominent 'Vale Park' sign is positioned on the park's Woodland Drive boundary facing the junction with Magazine Lane; two corresponding signs are located adjacent to the Magazine Lane Lodge entrance and the promenade entrance respectively.

**Woodland Drive entrance** – The Park's vehicle entrance is poorly situated with restricted visibility for both pedestrians and motorists alike, resident parking in the vicinity of the entrance restricts access for larger vehicles. The car park area has a rough unfinished surface with uneven levels. The area can become dusty during the summer and rainwater sheds down displacing loose fine aggregate. The driveway is initially surfaced with original granite cobble setts and then continues further along surfaced in Bitumen-MacAdam.

A smaller, surfaced and marked car park is situated at the end of the driveway adjacent to Vale House.

Cycle stands are not currently provided within the car park area but are available on the raised patio adjacent to Vale House.



Woodland Drive entrance and car park

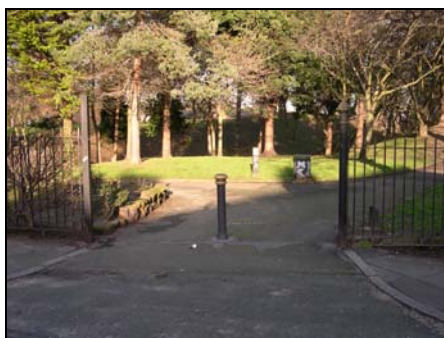
A large notice board is positioned adjacent to the main car park/sloping footpath which leads to the children's play area. The board provides information on events and activities taking place in the park and the local community.

**Vaughan Road entrance** – A minor undistinguished entrance largely used by local residents and children from the neighbouring primary school. No signage, other than prohibitive notices has been provided at this entrance, a ‘clean it up’ notice is stencilled on the footpath surface. The fencing to the entrance is not ornamental and an improvement in design could better reflect the park’s heritage.



Vaughan Road entrance

**Magazine Lane/Woodland Drive entrance** - Original cast-iron gateposts remain in place, a bench seat located on the adopted footway exterior to the park has been positioned unevenly adjacent to the entrance, and a fixed bollard prevents unauthorised vehicle access into the park. A ‘clean it up’ sign intended to deter dog fouling is stencilled onto the footpath surface at the threshold to the entrance.



Magazine Lane/Woodland Drive entrance

**Magazine Lane Lodge entrance** – A large park sign is prominent at this entrance, a fixed bollard is positioned to prevent unauthorised vehicle access.



Magazine Lane Lodge entrance



Lower Magazine Lane entrance

**Lower Magazine Lane entrance** - This is an inconspicuous and undistinguished access point situated in close proximity to the Victorian shelter on the promenade. A removable steel bollard prevents unauthorised vehicle access into the park. The promenade shelter, which is the responsibility of Technical Services Department retains some architectural heritage features, but is however in poor condition and was unclean at the time of inspection.

**Promenade entrance** - Distinctive with original gate piers with an attached sign indicating the park's café a large prominent 'Vale Park' sign is positioned to the right of the entrance, graffiti was evident to the sign. The boundary fencing, extending either side of this entrance is in poor condition with one panel missing completely detracting from the parks appearance.



Promenade entrance

During 2006 the Mersey Waterfront Regional Park project launched the 'Pride in our Promenades' initiative "aiming to transform many of our historic promenades, which have suffered from years of neglect". The Vale Park interface to the Magazine Promenade was identified as one area of improvement; to date design details have been submitted with proposals to provide new fencing along the park's promenade boundary, new seating and litter bins together with improvement to the lower Magazine Lane entrance and realignment of the onward footpath leading through the park. Improvements to the promenade shelter; external to the park are also identified. Mersey Waterfront undertook consultation forming a 'People's Panel' during summer 2006 the option chosen for the park's railings was a



historic design to mimic the traditional railings; as the majority of people felt it was important to retain the character of the 100 year old park and that a traditional design was considered more in keeping with the historical feel of the area, as of June 2007 work has not as yet commenced on site.

### **i) Healthy, safe and secure**

The park is covered under the Fouling of Land Act 1996; this act makes it an offence not to clean up in a public area if a dog under your control does foul. Powers to enforce £50 fixed penalty notices on offenders were extended to include Wirral's Community Patrol Officers in August 2007, a media campaign 'Don't give a dog a bad name' will be launched to highlight the new powers.

Wirral Council's policy regarding dog fouling is to encourage responsibility in dog ownership and owners are expected to clean up after their pets, dedicated dog waste bins are not provided; dog waste can be deposited into the Borough's litterbins consequently becoming incorporated with general waste this does not then entail the problems associated with disposal of faeces only bins.

The Park is designated a 'canine faeces removal area'; however dog fouling was apparent throughout the park, signs are in place at entrance points indicating the park is a 'clean it up' area. Many dog walkers use the park's litterbins for the disposal of removed faeces.

Wirral Council operates a 24 hour Community Patrol force, established to provide a response to any concern notified to them regarding anti-social behaviour occurring within Council owned land. The Patrol can be contacted on telephone number 666 5265.

During March 2007 Wirral Council's Anti Social Behaviour Team established the 'Parks Problem Solving Group' (PSG) in order to provide a coordinated approach to organised activities in parks during the summer months due to historic problems in parks. The group is comprised of Senior Police Officers and PCSO's, representatives from Wirral Community Safety Team and Wirral Sports Development Unit, Senior Youth Workers and Parks Officers; the Area Parks Manager is invited to attend the groups meetings.

The Parks and Countryside Service are represented on the Junior Joint Agency Group (Junior JAG), a forum consisting of Merseyside Police, Community Safety representatives and Youth workers. Issues regarding security in parks can be raised at the meeting with the intention of providing a multi agency approach to addressing problems.

The park is covered by Byelaws, made under Section 164 of the Public Health Act, 1875.

The Park's play equipment is independently assessed on an annual basis. An engineer from The Royal Society for Prevention of Accidents (RoSPA) assesses the equipment in accordance with EN 1176: "playground Equipment". A detailed written report itemising each piece of play equipment

and an assessment of its condition is provided following the inspection, the inspection covers the following:

- Site safety
- Suitability and condition of ancillary items
- Standard compliance, suitability and condition of equipment
- Dimensional compliance, suitability and condition of surfacing

The play area is designated as dog free; signs to this effect are attached at the two entrance points into the area.

It is intended to introduce an annual Parks Safety Inspection Checklist, the inspection is intended to identify defects within the park that present a safety problem for staff, users and adjacent residents. The checklist requires appraisal of the following items:

1. Paths, steps, ramps
2. Walls, fences, gates
3. Buildings
4. Furniture – signs, seats, litterbins etc
5. Soft landscape – grass, planted areas, water features etc
6. Trees

A Close circuit television camera is positioned within the park close to the promenade boundary. The camera forms part of Wirral Council's CCTV network covering extensive areas of the Borough, the camera provides surveillance in either direction along the promenade linking with other cameras to provide continuous tracking of incidents and potential suspects. The camera's 360° visual capability enables surveillance of the lower part of the park.

A Security Audit was undertaken and assessed the park under the following criteria:

- a) Sight-line visibility
- b) What evidence is apparent of anti-social behaviour or undesirable activity in the park?
- c) Motor vehicles
- d) The park at night
- e) Pathways, pedestrian routes
- f) Boundaries
- g) Buildings
- h) Play areas
- i) Is the park well cared for?

**a) Sight-line visibility**

Visibility is restricted in certain areas of the park due to the maturity of planting; this can be seen for example in the vicinity of the former public toilets which are encompassed within adjoining borders of overly mature shrub planting, the density of the tree canopies reduces the availability of light

admitted within the area; this is uninviting and creates an environment suited to anti social behaviour particularly during evenings.

Over mature planting in the border adjacent to the Magazine Lane/Woodland Drive entrance restricts visibility.

The conifer hedging extending along the boundary to the band lawn obscures visibility into the area.

Planting within the large border to the rears of no's 80-94 Vaughan Road consists of mature shrubs providing cover for undesirable behaviour extending towards the area of the former public toilets.

### **b) What evidence is apparent of anti-social behaviour or undesirable activity in the park?**

'Safer Wirral' data indicate 25 occasions when Wirral's Community Patrol made response to incidents occurring in the park during the period April to September 2006. All incidents responded to (by Police, CMP and Merseyside Fire and Rescue Service) totalled 50 ranking the park 5<sup>th</sup> in the top ten of the most Wirral parks requiring an incident response during this period.

Anti social behaviour occurs around the former two public toilet buildings evidenced by incidents of vandal damage and forced entry, graffiti is often applied to the buildings.

A small amount of graffiti is apparent to the walls of Vale House and has had to be removed recently from the rear wall of the Coach House.

Some small fire damage is apparent to the waste cart in the lower car park. The rear wall of the bandstand attracts graffiti.

Some graffiti is evident to the wall of the kick-about area.

Prohibitive noticing is de-faced; some graffiti is evident to the park's entrance signs.

### **c) Motor vehicles**

Fixed vehicle bollards have been positioned at the Magazine Lane/Woodland Drive entrance and the Magazine Lane 'Lodge' entrance. A removable bollard has been provided at the lower Magazine Lane entrance in order to restrict vehicle movement into the park via the Woodland Drive entrance only.

The park's car park is inadequate in size; at times of maximum park occupation ie during sunny summer weekends particularly when events are taking place; all available spaces are taken leading to vehicles parked along the driveway, (despite the provision of double-yellow line markings) resulting in an over-spill out onto neighbouring roads this can create conflict for residents within the area. The car park is unbound rough-surfaced which



becomes dusty during periods of dry weather; individual parking-bays cannot be marked onto the unstable surface.

The smaller lower car park associated with Vale House is surfaced and has individual parking bays marked in; yellow hatching deters inappropriate parking within the area, signage indicates usage of the car park is intended for visitors to Vale House only.

A sign attached to the gate pier of the lodge entrance indicates unauthorised vehicle access is not allowed.

No problems are apparent regarding vehicles entering the wider park from the car park area.

#### **d) The park at night**

The bulk of the problems associated with youths causing annoyance (YCA) and anti social behaviour (ASB) occurs during evenings. Anecdotally it is assumed that the majority of incidents associated with youths causing annoyance and anti social behaviour take place between 18:00 hrs and 21:00 hrs during Fridays and Saturdays predominately in the spring and summer months

Wirral Council neither encourages nor discourages the nighttime use of the park.

Incident reports compiled by Wirral Council's Community Patrol are made available to the Parks and Countryside Service and are provided to the Area Parks Manager; no assessment is currently made of this available data in order to establish the types and frequencies of incidents occurring.

External security lighting has been fitted to the wall of Vale House and the gable end of the Coach House.

The park is unlit at night with on street lamp columns providing a limited light over-spill into the periphery of the park along the Woodland Drive, Magazine Lane and promenade boundaries.

#### **e) Pathways, pedestrian routes**

The park's Woodland Drive entrance does not make separate provision for pedestrians; children on the way to the play area often use this route. Visibility for vehicles exiting the park from this entrance is restricted due to the rise in ground level from the car park into Woodland Drive; vehicles making deliveries to Vale House as well as park visitor traffic use this entrance.

The surface of the narrow footpath extending parallel to Magazine Lane has a tendency to become eroded due to tree root ingress.

A narrow path surfaced with cobblestones extends from the main Woodland Drive/Magazine Lane entrance path and leads upwards onto an elevated grassed area above the main drive and car lower park.

## **f) Boundaries**

Steel vertical round bar fencing to a height of 1.4 metres extends along the parks frontage to Woodland Drive, gates are not provided to the main park entrance.

Feature Sandstone retaining walling forms the park's boundary along Magazine Lane, gates are not provided to the top entrance or to the lodge entrance.

Steel fencing continues along the promenade frontage, gates are missing from the main prom entrance.

The garden walls, hedges and fences of neighbouring properties form the park's boundary to Vaughan Road.

The park's band lawn is enclosed by 1.8m high steels security fencing with lockable gates.

## **g) Buildings**

A CCTV camera mounted above the entrance to Vale House monitors the exterior vicinity; the building is alarmed with designated key holders, windows are protected with wire mesh and roller shutters to doors and the café windows.

The 'Coach House' has lockable double-leaf steel security gates fitted behind the exterior timber doors to the machine shed; mortice and Yale locks are fitted to the entrance door. The interior of the building was gutted by fire due to arson during 2004 and subsequently rebuilt. An exterior infrared security floodlight is fitted to the gable end of the building.

The Bandstand suffers from periodic graffiti and attempts are made to obliterate it quickly when it occurs.

A detached prefabricated single storey public toilet block was provided in the car park area adjacent to the Coach House during spring 2007. The building has stainless steel exterior doors and fittings; some damage to the buildings guttering and door handles has occurred. A timber palisade privacy fence has been erected following concerns from neighbours; the fence however facilitates youths climbing onto the buildings roof.

The two former public toilet buildings are deteriorating in condition presenting a poor appearance and are vulnerable to vandal damage. Ongoing cost is incurred in rectifying damage and in re-securing the premises following forced entry and damage. Graffiti is repeatedly applied to the external walls.

The Victorian promenade shelter is situated externally to the park however behaviour centred in and around the shelter has consequences that impact on the park, for example youths climb onto the roof of the building, daub graffiti on the interior and exterior walls and use the shelter to drink alcohol.

## **h) Play areas**

The children's play area is heavily used particularly during the school holidays in the summer. Visibility is good both towards and out of the site. Timber log-rounds form ground revetment along the rear of the area, play bark chippings are laid to the base of the equipment with rubberised tiles beneath the two swing bays. Contact information is not provided within the site. The area is enclosed and has self-closing gates provided.

## **i) Is the park well cared for?**

Graffiti is evident to a variety of surfaces within the park.

## **iii) Clean and well maintained**

Horticultural maintenance is carried out in accordance with a frequency based work programme allied to a specification. The work programme or "job card" is issued to staff on a quarterly basis; these are used for identifying all maintenance operations on the site for the period. Currently these documents are not being fully utilised and are under review.

The maintenance regime is carried out to meet general standards set out in a Borough-wide grounds maintenance 'frequency based' specification. The specification sets out corporate standards of maintenance.

The Friends of Vale Park commissioned a Tree Condition Survey for the park during November 2006 (see appendix iii) the survey was undertaken by TEP (The Environment Partnership)

The park's kick-about area is sand surfaced this requires periodic topping-up as the sand migrates from the area.

The children's play area is looking its age albeit some new items of play equipment have recently been added' equipment by modern standards and lacks play value and appeal, surfacing does not conform to current European safety standards.

The beds in the rose garden have become planted with mixed varieties over the years which does not present uniformity in colour, the ornamental grass area requires a programme of refurbishment.

The Senior Park Development Officer has carried out an assessment of the current maintenance condition of the park under the following 13 headings. The facilities and features are simply categorised as good, fair or poor and can only represent findings at the time of writing.

### Grounds maintenance site checklist

<b>Park</b>	Vale Park
<b>Date</b>	2007

<b>Grass</b>	<b>Good</b>	<b>Fair</b>	<b>Poor</b>
Fine Sport	N/A	N/A	N/A
Playing Fields	N/A	N/A	N/A
Ornamental		√	
General		√	
Rough	√		
Wild Flower Area	N/A	N/A	N/A

<b>Planting</b>	<b>Good</b>	<b>Fair</b>	<b>Poor</b>
Annual	√		
Herbaceous	N/A	N/A	N/A
Roses		√	
Shrubs		√	
Hedges		√	
Young staked trees / semi-mature trees		√	
Mature Trees		√	
Woodland	N/A	N/A	N/A

<b>Hard Surfaces</b>	<b>Good</b>	<b>Fair</b>	<b>Poor</b>
Tarmac Sport	N/A	N/A	N/A
Hard Porous	N/A	N/A	N/A
Footpaths		√	
Drives			√
Car Parks			√
ACW / ATP	N/A	N/A	N/A
Steps		√	

<b>Play Areas</b>	<b>Good</b>	<b>Fair</b>	<b>Poor</b>
Maintenance		√	

<b>Litter</b>	<b>Good</b>	<b>Fair</b>	<b>Poor</b>
Collection	√		
Bins	√		

<b>Buildings</b>	<b>Good</b>	<b>Fair</b>	<b>Poor</b>
Repair / Maintenance		√	
Graffiti		√	

<b>Fencing</b>	<b>Good</b>	<b>Fair</b>	<b>Poor</b>
Repair / Maintenance			√

<b>Walling</b>	<b>Good</b>	<b>Fair</b>	<b>Poor</b>
Maintenance		√	
Graffiti		√	

<b>Drainage</b>	<b>Good</b>	<b>Fair</b>	<b>Poor</b>
Ditches	N/A	N/A	N/A
Inspection Chambers / Covers	N/A	N/A	N/A
Gully pots	N/A	N/A	N/A

<b>Signage</b>	<b>Good</b>	<b>Fair</b>	<b>Poor</b>
Repair / Maintenance		√	
Graffiti			√

<b>Furniture / Memorials</b>	<b>Good</b>	<b>Fair</b>	<b>Poor</b>
Repair / Maintenance		√	
Graffiti		√	

<b>Lighting</b>	<b>Good</b>	<b>Fair</b>	<b>Poor</b>
Maintenance	N/A	N/A	N/A

<b>Water</b>	<b>Good</b>	<b>Fair</b>	<b>Poor</b>
Maintenance	N/A	N/A	N/A
Safety	N/A	N/A	N/A

It is apparent that operational factors extending beyond the influence of this management plan require consideration in order to improve the overall standard of grounds maintenance. The main issues for further consideration should include staff management (i.e. motivation, supervision and training) coupled with resourcing (i.e. revenue funding, machinery and materials).

**Principal Officer Parks Management/LF to analyse findings and report**

#### **iv) Sustainability**

Water and energy consumption at the park is monitored and where necessary modification is made to minimise wastage, thereby achieving economies in usage in line with the Authorities Environmental Policy.

Pesticide usage at the park is confined to non-residual Herbicide for the control of weed growth on pathways.

Control of Substances Hazardous to Health (C.O.S.H.H.) assessment records of the chemical based products used within the park form part of the Departments Quality Assurance procedures. Pesticide records are retained at the district depot (Central Park). Chemical storage and usage within the park complies with the requirements defined within the current pesticide handling legislation.

Motorised mowing equipment used at the park is checked for emission levels. An Environmental Audit of the Park was carried out and the recommendations have been incorporated into this plan.

Waste handling within the Parks and Countryside Service was subject to a review during 2006 following which 'Cleanaway' were appointed as the waste disposal contractor for the service. The contractor removes and carries out screening of all compactable waste recovering any recyclable material present in the contents for re-use in order to minimise waste sent to landfill.

Green waste generated at the park is separated out and composted at the area depot at Central Park. Waste timber and metals are also separated for reuse/recycling or burning at the depot, an apparent problem exists of local residents depositing garden waste in the park's waste carts.

Green waste generated at the park is not currently composted on site; tree brush resulting from tree work is chipped and stored at Central Park depot for reuse. Larger log sections are split and disposed of for fuel by a contractor thereby avoiding burning of larger material on-site.

The park's bedding plant requirement is produced using compost, which is 50% peat free. Peat is not used in any other capacity within the park.

## **v) Conservation and heritage**

### ***Biodiversity report to follow***

A commemorative stone inlaid into the gate pier of the promenade entrance records the opening of the park in 1899. Gates are not in place to the entrance.

A section of original granite cobble setts were revealed during resurfacing work to the entrance driveway from Woodland Drive, these have been left exposed, unfortunately the setts do not extend along the full length of the route.

The coach house and house remain from the original estate. Feature ground retaining stonework abuts the park's footpath network at various points.

Feature gate piers are positioned at the two Magazine Lane entrances and the promenade entrance; the pier cap has been dislodged to the promenade entrance.

The park's domed bandstand, constructed in ... constitutes a significant heritage feature within the park. The frieze of the ringed lintel supporting the domed roof has the names of great composers depicted in the masonry. The dome has become discoloured due to the proximity of the mature tree canopies. The bandstands backstage area was refurbished during 2006 when new flooring and electrics were provided.

The sandstone retaining walling extending along the park's Magazine Lane boundary requires attention the stonework has become degraded and pointing is defective the walling leans from vertical in places.



Magazine Lane boundary walling

In conjunction with the tree work identified see *appendix ...* a programme of replacement tree planting should be prepared in order to ensure a sustainable succession of mixed species at differing stages of maturity. Likewise an assessment of the park's shrub stock is required as some borders contain overly mature planting which has become woody and lack interest and diversity these borders should be revitalised in order to enhance the park and provide year round interest and colour with stems, flowers and foliage. The introduction of an area of sensory plants featuring textural and aromatic species would be of interest visitors with visual impairment and would also enhance the park's diversity.

The conifer hedging extending along the southern boundary of the band-lawn is of poor appearance and offers little value in terms of it's contribution to nature diversity in the park; consideration should be given to removal and replacement with a beech or mixed species hedge.

A Wisteria was planted in commemoration of the *park's ..... by .....* a trellis support is required and should be fixed to the wall of the café.

## **vi) Community involvement**

Vale House a joint Management Committee comprised of volunteers from the local community, Council Officers and local ward Councillors, manages the Community Centre. A wide variety of adult learning is provided at the House in conjunction with Wirral Sixth Form College, a play group and senior citizens extended daycare, an out of school group, complimentary therapies, Yoga and meditation are all provided. A Senior Citizen's luncheon club meets weekly at the House.

The Friends of Vale Park was started in 1989, the group produce a quarterly Newsletter 'Bandstand' they are active and supportive and have a current membership of 197 with members largely drawn from the surrounding



community. The Friends raise funds to support the events programme, purchase seating and planting and have also provided the three notice boards in the park. A Bandstand Committee comprised of representatives from the Vale House Joint Management Committee, coordinate and run the park's summer events programme hosted on the bandstand. During the schools summer holiday period the group organise a Children's Talent Show; 'Summer Sensations' which has its Grand Final at the local Floral Pavilion Theatre in September.

The Summer Festival organisers often struggle to secure the funding required to provide the park's musical events programme.

The Area Parks Manager and the Principal Officer Parks Management meet regularly with the Friends to discuss various aspects of the parks management.

The park Café is also managed and run by Vale House Joint Management Committee.

The Friends are intending to undertake a park user survey; the results of which are intended to inform this plan regarding community involvement in the park.

## **vii) Marketing**

The Wirral Council internet web site has pages providing information on the Parks and Countryside Service. The information regarding Vale Park is however limited with no direction details, photographs or events information. On-line information regarding the park is however available via a link from the New Brighton Community Partnership's website: [www.newbrightonwalrus.org.uk](http://www.newbrightonwalrus.org.uk) to 'postcards from Vale Park' at [www.myplace52.freeserve.co.uk](http://www.myplace52.freeserve.co.uk) a personal view of the park compiled by a local resident Mr Jim Woods.

The park's summer music festival is publicised in a number of local written media including the 'Wirral Parks and Countryside Events and Activities Newsletter' issued on a quarterly basis. The festival's details are also included on the Green Flag awards park events page of their website.

Vale Park and Vale House Community Centre primarily serve the local Community of the area in which the park is situated. The Park's Community Centre provides a well used educational, cultural, social and recreational resource. The programme of activities on offer within the Community Centre are promoted via publicity material displayed, in for example, libraries and other community facilities also via advertisements in the local press. The House aims to offer a broad range of learning opportunities (see categories above).

'The New Brighton Community Partnership' produces a regular newsletter 'The Walrus', which is distributed locally; this provides information and raises awareness of issues affecting the area, including Vale Park. An on-line

'magazine' version of 'The Walrus' can be accessed via [www.newbrightonwalrus.co.uk](http://www.newbrightonwalrus.co.uk) this similarly contains news and also raises the profile of Vale Park as well as providing a considerable amount of information regarding the New Brighton area. This Development plan can also be accessed on the site.

As referred to, the Park is also promoted via a very informative Internet web site, compiled by a local user of the Park. Wirral Borough Council's own site [www.wirral.gov.uk](http://www.wirral.gov.uk), also contains the park's details.

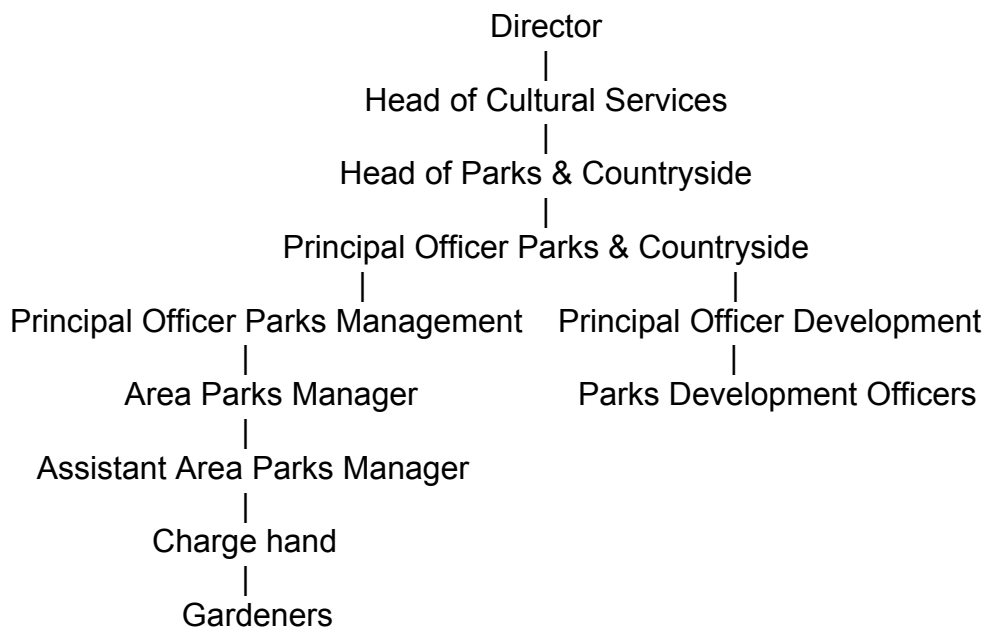
A Vale Park information leaflet has been produced and is available free from the reception area within Vale House.

The 'Friends Group' produces a quarterly newsletter, 'Bandstand', raising the profile/awareness of issues concerning the park and is distributed within the local area.

The park's Friends Group also annually produce a calendar featuring photographs of the park submitted by local park users ..... are printed and profits generated from sales are used for the benefit of the park.

## vii) Management

Following re-organisation of The Parks & Countryside Service in 2004 the following management structure was put in place.



## 5) Aims and objectives

### **Aim: To make the park welcoming**

#### **Objectives:**

- Refurbish the car park and the park's Woodland Drive entrance; scheme to include signage, surfacing and associated line markings, planting, cycle stands and separate provision for pedestrians and wheel chair users
- Upgrade the Vaughan Road entrance with ornamental fencing and signage of an appropriate design
- Improve the planting to the top Magazine Lane entrance
- Replace litter bins throughout with a more appropriate design
- Replace ornamental steel gates to the main promenade entrance
- Upgrade the children's play area to include equipment and surfacing
- Resurface the kick about area

### **Aim: To make the park healthy, safe and secure**

#### **Objectives:**

- Raise the profile of the issue of dog fouling with dog walkers and undertake enforcement with partner organisations
- Remove all graffiti from the park
- Establish a procedure to respond rapidly to all incidents of vandalism and graffiti
- Report all incidents of anti-social behaviour to Merseyside Police and establish a partnership approach to addressing the problems engaging Police Community Support Officers etc
- Raise any ongoing issues regarding security with Junior JAG representative
- Introduce annual site safety inspection procedure
- Demolish former public toilets and landscape area
- Remove over-mature planting from the raised border adjacent to the Woodland Drive entrance and re-plant with lower growing species
- Consider the removal of the conifer hedging along the boundary fencing to the band lawn and replant with a more suitable species
- Undertake phased programme of removal and replacement of the over-mature shrub stock in the border extending along the boundary to the rears of 80-94 Vaughan Road
- Monitor the level of incident responses to ensure an adequate level of response to problems
- Apply anti-graffiti coating to the vertical elevations of the bandstand
- Replace all defaced prohibitive notices

**Aim: To maintain the park to a good standard**

**Objectives:**

- *Principal Officer Parks Management to report re checklist (see pages 19 & 20)*
- Implement the recommendations of the tree condition survey
- Upgrade the children's play area
- Refurbish the rose garden to achieve uniformity in bed varieties and restore the ornamental lawn

**Aim: To manage the park in as sustainable way as possible**

**Objective:**

- Continue to monitor energy consumption at the site
- Provide signage at the waste collection point indicating the skip is for park use only
- Minimise pesticide usage at the park and where possible utilise cultural methods of weed control
- Continue to compost all green waste generated at the park and where possible re-use on site
- *Improve waste handling/recycling procedures*
- Consider the installation of cycle racks to encourage sustainable alternative transport

**Aim: To maximise opportunities to maintain and wherever possible improve the conservation value of the park**

**Objective:**

- *The relevant Parks Development Officer to report*
- Re-set disturbed gate pier cap to the promenade entrance
- Clean and repaint the bandstand dome
- Restore the condition of the boundary sandstone walling extending along the park's Magazine Lane boundary
- Prepare a programme of removal and replacement planting to ensure a sustainable succession of trees and shrubs
- Fix a trellis support to the café wall for the trailing Wisteria

**Aim: To continue to support and encourage local community involvement in the park**

**Objective:**

- Support Vale Park Friends to undertake the park users survey and utilise results to inform this plan/incorporate findings
- Undertake park users survey and incorporate findings into this plan

**Aim: To make information concerning the park as widely available as possible**

**Objectives:**

- Improve the available information regarding the park on the Wirral Council internet web site
- Undertake park users survey and incorporate findings into this plan

**Aim: To monitor and review the implementation of this plan**

**Objectives:**

- To create mechanisms to actively review maintenance, improvements and development

**6) Action Plan**

	<b>Action</b>	<b>Responsibility</b>	<b>When</b>	<b>Financial</b>
<b>1. To make the park welcoming</b>				
1.1	Refurbish the car park area to include signage, surfacing/markings, planting, cycle stands and separate provision for pedestrians and wheelchair users	Parks Development Officer (PDO)/landscape Team (LT)		Requires additional funding (RAF) £50K
1.2	Upgrade Vaughan Road entrance to include feature steelwork and signage	PDO/LT		RAF £5K
1.3	Refurbish the shrub border adjacent to the top Magazine Lane entrance 50M <sup>2</sup> @ £25	PDO/LT/Area Parks Manager (APM)		RAF £1.25K
1.4	Replace litterbins throughout with design more appropriate with the parks heritage 12NO. @ £750	PDO/APM		RAF £9K
1.5	Resurface the kick-about area 570M <sup>2</sup> @ £30	LT		RAF £17K
<b>2. To make the park healthy, safe and secure</b>				
2.1	Raise the profile regarding the issue of dog fouling in the park and undertake enforcement with partners	APM/Partners		Within existing resources (WER)
2.2	Remove all graffiti from the park	APM		WER
2.3	Establish a procedure for the rapid response to all incidents of vandalism, including graffiti	APM		WER
2.4	Report all incidents of anti-social behaviour to Merseyside	APM		WER

	Police and establish a partnership approach to addressing the problems			
2.5	Raise any ongoing concerns with the Junior JAG representative	APM		WER
2.6	Introduce annual site safety inspection	APM		WER
2.7	Demolish the former public toilets and landscape the area	Technical Services/LT		RAF
2.8	Consider the removal of the conifer hedge in the band lawn and replant the entire perimeter with a more suitable hedging species 114Lim M @ £15	APM		RAF £2K
2.9	Undertake phased programme of removal and replacement of the shrub stock in the border situated to the rear of Vaughan Road 1000M <sup>2</sup> @ £25	APM/LT		RAF £25K
2.10	Monitor the level of incident responses	APM		WER
2.11	Apply anti-graffiti coating to the bandstand	APM		£3K
2.12	Replace all prohibitive noticing	APM		WER
<b>3. To maintain the park to a good standard</b>				
3.1	Principal Officer Parks Management to report re maintenance checklist	Principal Officer Parks Management		
3.2	Implement the tree survey	APM		WER
3.3	Refurbish the children's play area	LT/APM		£40K
3.4	Refurbish the rose garden	APM		WER
<b>4. To manage the park in as sustainable way as possible</b>				

4.1	Continue to monitor energy consumption at the site			
4.2	Provide signage at the waste collection point indicating the skip is for park use only	APM		WER
4.3	Minimise pesticide usage at the park and where possible utilise cultural methods of weed control	APM		
4.4	Continue to compost all green waste generated at the park and where possible re-use on site	APM		
4.5	Improve waste handling/recycling procedures	APM/Partners		
<b>5. To maximise opportunities to maintain and wherever possible improve the conservation value of the park</b>				
5.1	<i>Biodiversity report to follow</i>	PDO		WER
5.2	Re-set disturbed gate pier cap	APM		WER
5.3	Clean and repaint the bandstand dome	PDO/LT		RAF
5.4	Restore the condition of the sandstone boundary walling along Magazine Lane	LT		RAF
5.5	Produce Park planting management plan to consider the replacement of over mature trees and shrubs with planting at successive stages of development.	?		RAF
5.6	Fix trellis support to café wall for the commemoratively planted Wisteria	APM		WER
<b>6. To continue to support and encourage local community involvement in the park</b>				
6.1	Support the Vale Park Friends with the park users survey and incorporate results into this plan	PDO		WER
<b>7. To make information concerning the park as widely available as possible</b>				
7.1	Improve the available information regarding the park on the Wirral Council Internet website	Parks Officer		WER
<b>8. To manage and review the implementation of this plan</b>				



8.1	Introduce a mechanism to monitor and review progress of both development and the maintenance of the park	APM		WER
-----	--	-----	--	-----

## 7) Monitoring and review

There will be a precise a clear process for monitoring both maintenance and development.

The Principal Officer for Parks Management will incorporate progress on Management Plan actions into the monthly management team meetings.

Charge hands will report back on progress or shortfalls to the Area Parks Manager after each visit.

The Area Parks Manager will carryout random inspections of the site between programmed monitoring visits.

The Area Parks Manager will carryout a quarterly inspection of the site with the relevant gardeners to assess maintenance standards and check against the issued work programme and specification.

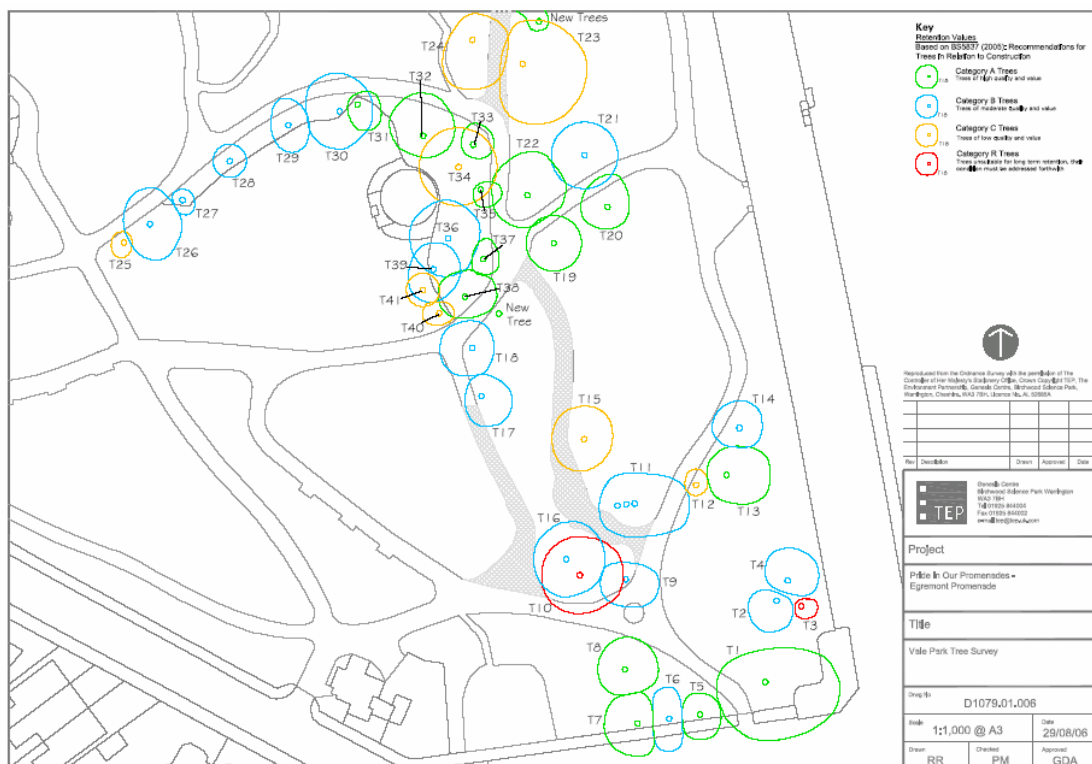
The Parks Development Officer will carryout a bi-annual site visit with the Area Parks Manager and Friends representatives to oversee the delivery of the Management Plan. The target dates in the five-year action plan will enable people to see how the partnership is making progress and when that action has been achieved.

## 8) Appendix

### i) Aerial Photograph Vale Park



### ii) Tree Condition Survey



APPENDIX ONE: Vale Park Arboricultural Survey Data Sheets



Surveyor R. Round  
 Date 03-Aug-05  
 Town Wilms  
 Site Vale Park  
 Dwg Ref D1079.01.006

Ref	Species	Height	Stem Dia.	Crown Spread North	Crown Spread South	Crown Spread East	Crown Spread West	Maturity	Condition	Comments on form, condition, health and significant defects	BS5837 Tree Quality Assess	Radius of RPA guide circle	BS5837 RPA	Management Recommendations	Estimated Remaining Contribution
		(m)	(mm)	(m)	(m)	(m)	(m)	Young, Middle Age, Mature, Veteran	Good, Fair, Poor		A,B,C,R (1,2,3)	(m)	(m2)		Long, Medium, Short
<b>Trees</b>															
T1	London Plane	16.0	150.0	4.0	11.0	13.0	11.0	Young	Good	Prominent feature tree, asymmetric crown due to adjacent sycamore, large deadwood in the crown	A	1.8	10.2	Remove deadwood and crown lift to 3.5m over road	Long
T2	Sycamore	15.0	450.0	1.0	6.0	5.0	6.0	Middle Age	Good	Part of group, reasonable form, dominant tree	B	5.4	91.6		Long
T3	Whitebeam	12.0	300.0	1.0	2.0	3.0		Middle Age	Poor	Poor form, basal wound with stem cavity and decay, suppressed	R			Fell	Short
T4	Sycamore	14.0	400.0	6.0	1.0	6.0	5.0	Middle Age	Fair	Asymmetric crown, part of group on mound, minor damage to surface roots	B	4.8	72.4		Long
T5	Sycamore	12.0	300.0	4.0	5.0	5.0	4.0	Young	Good	Along boundary wall, prominent feature, some crossing branches in crown	A	3.6	40.7	Crown lift to 3.5m over road, crown clean	Long
T6	Sycamore	13.0	400.0	6.0	6.0	3.0	3.0	Middle Age	Fair	Along boundary wall, slight asymmetric crown, some thinning of upper canopy noted	B	4.8	72.4	Remove to favour adjacent trees	Medium
T7	Sycamore	12.0	350.0	6.0	6.0	3.0	6.0	Middle Age	Good	Along boundary wall, good form	A	4.2	55.4	Crown lift to 3.5m over road	Long
T8	Ash	18.0	250.0	6.0	5.0	6.0	5.0	Young	Good	Good form, minor deadwood in crown, some lower branches damaged	A	3.0	28.3	Crown lift to 3.5m over road, crown clean	Long
T9	Sycamore	14.0	350.0	3.0	5.0	6.0	5.0	Middle Age	Fair	Asymmetric crown, reaction growth ris on stem	B	4.2	55.4		Medium
T10	Beech	12.0	400.0	7.0	7.0	8.0	7.0	Middle Age	Poor	Has been recently heavily crown lifted, decay and cavities to two adjacent large stem wounds, large wound to lower stem on south side, small leaf size indicates low vigour, cable imbedded in stem near wounds	R			Fell (ROOST POTENTIAL)	Short
T11	Sycamore	14.0	300.0	6.0	6.0	10.0	3.0	Middle Age	Fair	Interesting visual feature, appear stable at present	B	3.6	40.7	Monitor	Medium
T12	Sycamore	13.0	250.0	3.0	2.0	2.0	2.0	Young	Fair	Tall thin suppressed crown, basal stem sweep, bark damage to midstem	C	3.0	28.3	Remove to favour adjacent oak	Short
T13	Turkey Oak	13.0	450.0	6.0	4.0	8.0	2.0	Middle Age	Good	Slight asymmetric crown, broken hanging branch at 3m	A	5.4	91.6	Crown lift to 3m, remove broken branch	Long
T14	Sycamore	11.0	300.0	5.0	4.0	4.0	5.0	Middle Age	Good	Reasonable form, minor cavity to pruning wound, limited decay	B	3.6	40.7		Long
T15	Horse Chestnut	12.0	350.0	6.0	6.0	5.0	6.0	Middle Age	Poor	Thin crown, some dieback, poor growth, basal stem damage, scattered bark death, phytophthora bleeding canker, ground level changes are likely cause	C	4.2	55.4	Consider removal and replacement, or monitor condition	Short
T16	Norway Maple	10.0	300.0	7.0	7.0	7.0	6.0	Middle Age	Good	Squat crown affected by exposure of location	B	3.6	40.7		Long

APPENDIX ONE: Vale Park Arboricultural Survey Data Sheets

Ref	Species	Height	Stem Dia.	Crown Spread North	Crown Spread South	Crown Spread East	Crown Spread West	Maturity	Condition	Comments on form, condition, health and significant defects	BS5837 Tree Quality Assess.	Radius of RPA guide circle	BS5837 RPA	Management Recommendations	Estimated Remaining Contribution
		(m)	(mm)	(m)	(m)	(m)	(m)	Young, Middle Age, Mature, Veteran	Good, Fair, Poor		A, B, C, R (1, 2, 3)	(m)	(m2)		Long, Medium, Short
T17	Sycamore	13.0	300.0	4.0	6.0	6.0	3.0	Middle Age	Good	Asymmetric crown, adjacent to recently removed path, some minor buttress damage	B	3.6	40.7		Long
T16	Sycamore	12.0	350.0	5.0	5.0	4.0	6.0	Middle Age	Good	Good form, minor deadwood in crown, minor bark wound to mid stem	B	4.2	55.4	Crown lift to 3.5m and remove deadwood	Long
T19	Norway Maple	13.0	300.0	5.0	5.0	5.0	5.0	Young	Good	Good form	A	3.6	40.7		Long
T20	Horse Chestnut	12.0	300.0	6.0	4.0	4.0	5.0	Young	Good	Good form	A	3.6	40.7		Long
T21	Ash	11.0	250.0	6.0	6.0	6.0	6.0	Young	Fair	Mis-shapen form due to lack of apical dominance	B	3.0	28.3	Crown lift to 3m over path	Long
T22	Norway Maple	11.0	250.0	8.0	7.0	8.0	7.0	Young	Good	Good form	A	3.0	28.3	Crown lift to 3m over path	Long
T23	Hybrid Poplar	17.0	600.0	9.0	12.0	12.0	5.0	Mature	Fair	Excessive stem lean (30 deg) crossing branches in dense crown.	C	7.2	162.9	Crown thin and monitor, consider removal and replacement	Short
T24	Hybrid Poplar	16.0	600.0	5.0	9.0	11.0	4.0	Mature	Fair	Slight stem lean, large deadwood in dense canopy	C	7.2	162.9	Crown thin and monitor, consider removal and replacement	Short
T25	Ornamental Cherry	6.0	200.0	2.0	3.0	1.0	2.0	Mature	Poor	Mis-shapen form, some dieback of crown, large surface roots damaged	C	2.4	18.1	Consider removal	Short
T26	Ornamental Cherry	11.0	400.0	7.0	7.0	6.0	5.0	Mature	Fair	Good form, large surface roots damaged	B	4.8	72.4	Crown lift to 3m over path	Medium
T27	Whitebeam	9.0	150.0	2.0	3.0	2.0	2.0	Young	Good	Included bark in many branch unions	B	1.8	10.2	Monitor condition	Medium
T28	Whitebeam	8.0	150.0	3.0	3.0	3.0	3.0	Young	Fair	Included bark in many branch unions, minor stem wound	B	1.8	10.2	Monitor condition	Medium
T29	Whitebeam	10.0	150.0	5.0	5.0	4.0	3.0	Young	Good	Good form	B	1.8	10.2		Medium
T30	Ornamental Cherry	12.0	450.0	7.0	7.0	6.0	7.0	Middle Age	Good	Included union branch at 2m	B	5.4	91.6		Medium
T31	Camperdown Elm	4.0	300.0	2.0	6.0	5.0	2.0	Middle Age	Good	Good form	A	3.6	40.7		Long
T32	Red Oak	11.0	300.0	8.0	3.0	6.0	7.0	Young	Good	Slightly suppressed by adjacent beech	A	3.6	40.7		Long
T33	Lime	14.0	200.0	4.0	2.0	4.0	2.0	Young	Good	Slightly suppressed by adjacent beech	A	2.4	18.1		Long
T34	Beech	18.0	500.0	7.0	7.0	7.0	7.0	Middle Age	Fair	Thinning upper crown, small leaf size and dieback indicate poor condition and low vigour	C	6.0	113.1	Consider removal to favour other trees	Short
T35	Lime	12.0	200.0	1.0	3.0	4.0	1.0	Young	Good	Crown suppressed by adjacent beech	A	2.4	18.1	Crown lift to 3m over path	Long
T36	Lime	17.0	450.0	7.0	7.0	6.0	7.0	Mature	Good	Good form, possible basal cavity near stem depressions (access restricted at time of survey)	B	5.4	91.6	Undertake detailed close inspection (access restricted at time of survey)	Medium
T37	London Plane	10.0	100.0	4.0	3.0	3.0	2.0	Young	Good	Good form	A	1.2	4.5		Long
T38	Norway Maple	13.0	300.0	5.0	5.0	6.0	4.0	Middle Age	Good	Good form, storage container located adjacent to stem	A	3.6	40.7		Long
T39	Sycamore	15.0	300.0	5.0	6.0	5.0	4.0	Middle Age	Good	Good form, sweep to stem base	B	3.6	40.7		Long
T40	Ornamental Cherry	5.0	250.0	2.0	2.0	3.0	3.0	Mature	Fair	Small tree of low vigour	C	3.0	28.3	Consider removal	Short
T41	Ornamental Cherry	6.0	250.0	3.0	3.0	3.0	3.0	Middle Age	Fair	Reasonable form, screens storage container	C	3.0	28.3	Consider removal	Short



iii) Events programme 2007



**Vale Park Summer Band Festival Programme 2007**

<b>Sunday 20<sup>th</sup> May</b>	<b>Weaver Valley Accordion Band</b>	
<b>Friday 25<sup>th</sup> May</b>	<b>My Generation Rock – young local bands</b>	<b>6 –</b>
<b>9 pm</b>		
<b>Sunday 27<sup>th</sup> May</b>	<b>Praise in the Park</b>	
<b>Monday 28<sup>th</sup> May</b>	<b>JOYTIME 2007</b>	
<b>Sun 3<sup>rd</sup> June</b>	<b>Folk Festival</b>	
<b>Sun 10<sup>th</sup> June -</b>	<b>Red Balloon Festival</b>	
<b>Sunday 17<sup>th</sup> June -</b>	<b>St Helen's Concert Band</b>	
<b>Sunday 24<sup>th</sup> June -</b>	<b>Maghull Royal British Legion Town Band</b>	
<b>Friday 29<sup>th</sup> June</b>	<b>My Generation Rock – young local bands</b>	<b>6 – 9pm</b>
<b>Sunday 1<sup>st</sup> July -</b>	<b>Massed Concert Bands conducted by Les</b>	
<b>Stephenson</b>		
<b>Concert Band - The Red</b>	<b>ARCM -The St Helens Concert Band - The Heswall</b>	
<b>Saturday 7<sup>th</sup> July</b>	<b>Rose Concert Band</b>	
<b>Sunday 8<sup>th</sup> July -</b>	<b>ZUKO in Concert</b>	<b>3 – 9 pm</b>
<b>Saturday 14<sup>th</sup> July</b>	<b>Golborne Band</b>	
<b>Sunday 15<sup>th</sup> July</b>	<b>Vale Park Rock</b>	<b>12 – 4 pm</b>
<b>Sunday 22<sup>nd</sup> July -</b>	<b>Port Sunlight Lyceum Brass</b>	
<b>Sunday 29<sup>th</sup> July -</b>	<b>Ellesmere Port Silver Band</b>	
	<b>Greenall's Band</b>	
<b>Sunday 5<sup>th</sup> August -</b>	<b>The Red Rose Concert Band</b>	

Sunday 12th August - Mereyside Brass  
Sunday 19th August Heswall Concert Band  
Sunday 26th August - The Norman Roy Orchestra GLENN MILLER  
SOUND  
Saturday 1st September Line Dancing  
Sunday 2nd September - Massed Brass Bands - Ellesmere Port Silver Band  
Greenall's Band - Port Sunlight Lyceum Band

## **Events organised by the FRIENDS OF VALE PARK**

All concerts 2.30 – 4.30 pm unless stated otherwise

**The Children's Talent Show – JOYTIME 2007 –**

**Monday to Friday 2 – 5 pm**

Monday 23rd July until Friday 24<sup>th</sup> August.



Vale Park Grounds Maintenance (1)		January to the end of June week numbers.											Weekly items					Daily items									
	1	2	3	4	5	6	7	8	9	10	11	12	13	14	15	16	17	18	19	20	21	22	23	24	25	26	
General Grass Mow with cylinder								<input checked="" type="checkbox"/>				<input checked="" type="checkbox"/>				<input checked="" type="checkbox"/>			<input checked="" type="checkbox"/>			<input checked="" type="checkbox"/>				<input checked="" type="checkbox"/>	
General Grass Mow with rotary								<input checked="" type="checkbox"/>				<input checked="" type="checkbox"/>				<input checked="" type="checkbox"/>			<input checked="" type="checkbox"/>			<input checked="" type="checkbox"/>				<input checked="" type="checkbox"/>	
General Grass W/F lines Litterpick/Spot treat																	<input checked="" type="checkbox"/>					<input checked="" type="checkbox"/>				<input checked="" type="checkbox"/>	
General Grass Bank Mow + Strim obstacles 3 Occ								<input checked="" type="checkbox"/>				<input checked="" type="checkbox"/>	<input checked="" type="checkbox"/>	<input checked="" type="checkbox"/>	<input checked="" type="checkbox"/>	<input checked="" type="checkbox"/>	<input checked="" type="checkbox"/>	<input checked="" type="checkbox"/>	<input checked="" type="checkbox"/>	<input checked="" type="checkbox"/>	<input checked="" type="checkbox"/>	<input checked="" type="checkbox"/>	<input checked="" type="checkbox"/>	<input checked="" type="checkbox"/>	<input checked="" type="checkbox"/>	<input checked="" type="checkbox"/>	
Premium Ornamental Grass Mow + Edge												<input checked="" type="checkbox"/>	<input checked="" type="checkbox"/>	<input checked="" type="checkbox"/>	<input checked="" type="checkbox"/>	<input checked="" type="checkbox"/>	<input checked="" type="checkbox"/>	<input checked="" type="checkbox"/>	<input checked="" type="checkbox"/>	<input checked="" type="checkbox"/>	<input checked="" type="checkbox"/>	<input checked="" type="checkbox"/>	<input checked="" type="checkbox"/>	<input checked="" type="checkbox"/>	<input checked="" type="checkbox"/>	<input checked="" type="checkbox"/>	
Premium Ornamental Grass Fertilize Spring/Summ																					<input checked="" type="checkbox"/>						
Premium Ornamental Grass Fertilize Aut/Winter																						<input checked="" type="checkbox"/>					
Premium Ornamental Grass Selective Herbicide																						<input checked="" type="checkbox"/>					
Premium Ornamental Cutbacks Litter/Spot Herb																	<input checked="" type="checkbox"/>					<input checked="" type="checkbox"/>				<input checked="" type="checkbox"/>	
Ornamental Grass Mow + Edge												<input checked="" type="checkbox"/>	<input checked="" type="checkbox"/>	<input checked="" type="checkbox"/>	<input checked="" type="checkbox"/>	<input checked="" type="checkbox"/>	<input checked="" type="checkbox"/>	<input checked="" type="checkbox"/>	<input checked="" type="checkbox"/>	<input checked="" type="checkbox"/>	<input checked="" type="checkbox"/>	<input checked="" type="checkbox"/>	<input checked="" type="checkbox"/>	<input checked="" type="checkbox"/>	<input checked="" type="checkbox"/>	<input checked="" type="checkbox"/>	
Ornamental Grass Selective Herbicide																						<input checked="" type="checkbox"/>				<input checked="" type="checkbox"/>	
Ornamental Grass Cutbacks Litter/Spot Herb																	<input checked="" type="checkbox"/>					<input checked="" type="checkbox"/>				<input checked="" type="checkbox"/>	
Annual Bedding Spring Strip Beds																											
Annual Bedding Spring Hand dig beds																											
Annual Bedding Spring Collect & plant plants																											
Annual Bedding Spring Maintain Bedding						<input checked="" type="checkbox"/>					<input checked="" type="checkbox"/>	<input checked="" type="checkbox"/>	<input checked="" type="checkbox"/>	<input checked="" type="checkbox"/>	<input checked="" type="checkbox"/>	<input checked="" type="checkbox"/>	<input checked="" type="checkbox"/>	<input checked="" type="checkbox"/>	<input checked="" type="checkbox"/>	<input checked="" type="checkbox"/>	<input checked="" type="checkbox"/>	<input checked="" type="checkbox"/>	<input checked="" type="checkbox"/>	<input checked="" type="checkbox"/>	<input checked="" type="checkbox"/>	<input checked="" type="checkbox"/>	
Annual Bedding Summer Strip Beds																						<input checked="" type="checkbox"/>					
Annual Bedding Summer Cultivate/Fertilize																						<input checked="" type="checkbox"/>					
Annual Bedding Summer Collect and plant plants																						<input checked="" type="checkbox"/>					
Annual Bedding Summer Maintain bedding																										<input checked="" type="checkbox"/>	
Annual Bedding Summer Water Bedding																										<input checked="" type="checkbox"/>	
Herbaceous Cut down plants/fork bed												<input checked="" type="checkbox"/>															
Herbaceous Fertilize												<input checked="" type="checkbox"/>															
Herbaceous Maintain bed																<input checked="" type="checkbox"/>		<input checked="" type="checkbox"/>			<input checked="" type="checkbox"/>		<input checked="" type="checkbox"/>		<input checked="" type="checkbox"/>		<input checked="" type="checkbox"/>
Roses Hand weed/Fork or hoe								<input checked="" type="checkbox"/>							<input checked="" type="checkbox"/>		<input checked="" type="checkbox"/>		<input checked="" type="checkbox"/>		<input checked="" type="checkbox"/>		<input checked="" type="checkbox"/>		<input checked="" type="checkbox"/>		<input checked="" type="checkbox"/>
Roses Annual clean out								<input checked="" type="checkbox"/>																			
Roses Fertilize												<input checked="" type="checkbox"/>															
Roses Fungicide																					<input checked="" type="checkbox"/>						
Roses Insecticide																					<input checked="" type="checkbox"/>						
Roses Deadhead and Sucker removal																									<input checked="" type="checkbox"/>		
Roses Cutting back																											
Roses Pruning						<input checked="" type="checkbox"/>																					
Shrubs Prune (Any time after flowering)																											
Shrubs Litterpick/Spot treat																<input checked="" type="checkbox"/>						<input checked="" type="checkbox"/>					<input checked="" type="checkbox"/>
Shrubs Annual clean out/Tidy beds												<input checked="" type="checkbox"/>															
Hedges Cut non ornamental 2sides/top																											<input checked="" type="checkbox"/>
Hedges Base Litterpick/Spot treat Herbicide																			<input checked="" type="checkbox"/>				<input checked="" type="checkbox"/>				<input checked="" type="checkbox"/>
Hedge Base Clean out 2 occasions																											<input checked="" type="checkbox"/>
Staked Trees Check YST'S												<input checked="" type="checkbox"/>															
Staked Trees Litterpick/Spot treat tree bases																	<input checked="" type="checkbox"/>					<input checked="" type="checkbox"/>					<input checked="" type="checkbox"/>
Play Area Lubricate play equipment													<input checked="" type="checkbox"/>														<input checked="" type="checkbox"/>
Play Area Rake over play bark	<input checked="" type="checkbox"/>	<input checked="" type="checkbox"/>	<input checked="" type="checkbox"/>	<input checked="" type="checkbox"/>	<input checked="" type="checkbox"/>	<input checked="" type="checkbox"/>	<input checked="" type="checkbox"/>	<input checked="" type="checkbox"/>	<input checked="" type="checkbox"/>	<input checked="" type="checkbox"/>	<input checked="" type="checkbox"/>	<input checked="" type="checkbox"/>	<input checked="" type="checkbox"/>	<input checked="" type="checkbox"/>	<input checked="" type="checkbox"/>	<input checked="" type="checkbox"/>	<input checked="" type="checkbox"/>	<input checked="" type="checkbox"/>	<input checked="" type="checkbox"/>	<input checked="" type="checkbox"/>	<input checked="" type="checkbox"/>	<input checked="" type="checkbox"/>	<input checked="" type="checkbox"/>	<input checked="" type="checkbox"/>	<input checked="" type="checkbox"/>	<input checked="" type="checkbox"/>	<input checked="" type="checkbox"/>
Play Area Fork over play bark		<input checked="" type="checkbox"/>													<input checked="" type="checkbox"/>												
Play Area Daily inspection	<input checked="" type="checkbox"/>	<input checked="" type="checkbox"/>	<input checked="" type="checkbox"/>	<input checked="" type="checkbox"/>	<input checked="" type="checkbox"/>	<input checked="" type="checkbox"/>	<input checked="" type="checkbox"/>	<input checked="" type="checkbox"/>	<input checked="" type="checkbox"/>	<input checked="" type="checkbox"/>	<input checked="" type="checkbox"/>	<input checked="" type="checkbox"/>	<input checked="" type="checkbox"/>	<input checked="" type="checkbox"/>	<input checked="" type="checkbox"/>	<input checked="" type="checkbox"/>	<input checked="" type="checkbox"/>	<input checked="" type="checkbox"/>	<input checked="" type="checkbox"/>	<input checked="" type="checkbox"/>	<input checked="" type="checkbox"/>	<input checked="" type="checkbox"/>	<input checked="" type="checkbox"/>	<input checked="" type="checkbox"/>	<input checked="" type="checkbox"/>	<input checked="" type="checkbox"/>	<input checked="" type="checkbox"/>
Play Area Litterpick/Sweep/Bins	<input checked="" type="checkbox"/>	<input checked="" type="checkbox"/>	<input checked="" type="checkbox"/>	<input checked="" type="checkbox"/>	<input checked="" type="checkbox"/>	<input checked="" type="checkbox"/>	<input checked="" type="checkbox"/>	<input checked="" type="checkbox"/>	<input checked="" type="checkbox"/>	<input checked="" type="checkbox"/>	<input checked="" type="checkbox"/>	<input checked="" type="checkbox"/>	<input checked="" type="checkbox"/>	<input checked="" type="checkbox"/>	<input checked="" type="checkbox"/>	<input checked="" type="checkbox"/>	<input checked="" type="checkbox"/>	<input checked="" type="checkbox"/>	<input checked="" type="checkbox"/>	<input checked="" type="checkbox"/>	<input checked="" type="checkbox"/>	<input checked="" type="checkbox"/>	<input checked="" type="checkbox"/>	<input checked="" type="checkbox"/>	<input checked="" type="checkbox"/>	<input checked="" type="checkbox"/>	<input checked="" type="checkbox"/>
Play Area Maintenance and repairs	<input checked="" type="checkbox"/>	<input checked="" type="checkbox"/>	<input checked="" type="checkbox"/>	<input checked="" type="checkbox"/>	<input checked="" type="checkbox"/>	<input checked="" type="checkbox"/>	<input checked="" type="checkbox"/>	<input checked="" type="checkbox"/>	<input checked="" type="checkbox"/>	<input checked="" type="checkbox"/>	<input checked="" type="checkbox"/>	<input checked="" type="checkbox"/>	<input checked="" type="checkbox"/>	<input checked="" type="checkbox"/>	<input checked="" type="checkbox"/>	<input checked="" type="checkbox"/>	<input checked="" type="checkbox"/>	<input checked="" type="checkbox"/>	<input checked="" type="checkbox"/>	<input checked="" type="checkbox"/>	<input checked="" type="checkbox"/>	<input checked="" type="checkbox"/>	<input checked="" type="checkbox"/>	<input checked="" type="checkbox"/>	<input checked="" type="checkbox"/>	<input checked="" type="checkbox"/>	<input checked="" type="checkbox"/>
Litterpick Park on a Daily basis	<input checked="" type="checkbox"/>	<input checked="" type="checkbox"/>	<input checked="" type="checkbox"/>	<input checked="" type="checkbox"/>	<input checked="" type="checkbox"/>	<input checked="" type="checkbox"/>	<input checked="" type="checkbox"/>	<input checked="" type="checkbox"/>	<input checked="" type="checkbox"/>	<input checked="" type="checkbox"/>	<input checked="" type="checkbox"/>	<input checked="" type="checkbox"/>	<input checked="" type="checkbox"/>	<input checked="" type="checkbox"/>	<input checked="" type="checkbox"/>	<input checked="" type="checkbox"/>	<input checked="" type="checkbox"/>	<input checked="" type="checkbox"/>	<input checked="" type="checkbox"/>	<input checked="" type="checkbox"/>	<input checked="" type="checkbox"/>	<input checked="" type="checkbox"/>	<input checked="" type="checkbox"/>	<input checked="" type="checkbox"/>	<input checked="" type="checkbox"/>	<input checked="" type="checkbox"/>	<input checked="" type="checkbox"/>
Public Toilets Daily clean	<input checked="" type="checkbox"/>	<input checked="" type="checkbox"/>	<input checked="" type="checkbox"/>	<input checked="" type="checkbox"/>	<input checked="" type="checkbox"/>	<input checked="" type="checkbox"/>	<input checked="" type="checkbox"/>	<input checked="" type="checkbox"/>	<input checked="" type="checkbox"/>	<input checked="" type="checkbox"/>	<input checked="" type="checkbox"/>	<input checked="" type="checkbox"/>	<input checked="" type="checkbox"/>	<input checked="" type="checkbox"/>	<input checked="" type="checkbox"/>	<input checked="" type="checkbox"/>	<input checked="" type="checkbox"/>	<input checked="" type="checkbox"/>	<input checked="" type="checkbox"/>	<input checked="" type="checkbox"/>	<input checked="" type="checkbox"/>	<input checked="" type="checkbox"/>	<input checked="" type="checkbox"/>	<input checked="" type="checkbox"/>	<input checked="" type="checkbox"/>	<input checked="" type="checkbox"/>	<input checked="" type="checkbox"/>
Public Toilets Unlock and lock	<input checked="" type="checkbox"/>	<input checked="" type="checkbox"/>	<input checked="" type="checkbox"/>	<input checked="" type="checkbox"/>	<input checked="" type="checkbox"/>	<input checked="" type="checkbox"/>	<input checked="" type="checkbox"/>	<input checked="" type="checkbox"/>	<input checked="" type="checkbox"/>	<input checked="" type="checkbox"/>	<input checked="" type="checkbox"/>	<input checked="" type="checkbox"/>	<input checked="" type="checkbox"/>	<input checked="" type="checkbox"/>	<input checked="" type="checkbox"/>	<input checked="" type="checkbox"/>	<input checked="" type="checkbox"/>	<input checked="" type="checkbox"/>	<input checked="" type="checkbox"/>	<input checked="" type="checkbox"/>	<input checked="" type="checkbox"/>	<input checked="" type="checkbox"/>	<input checked="" type="checkbox"/>	<input checked="" type="checkbox"/>	<input checked="" type="checkbox"/>	<input checked="" type="checkbox"/>	<input checked="" type="checkbox"/>
P/Toilets Hardware Clean/Anti-Vandal Paint																											<input checked="" type="checkbox"/>



